

# CERTIFICATE OF LOCATION OF GOVERNMENT CORNER

NORTHEAST Corner of Section 4, Township 107N, Range 39W

5th Principal Meridian, State of Minnesota, County of MURRAY

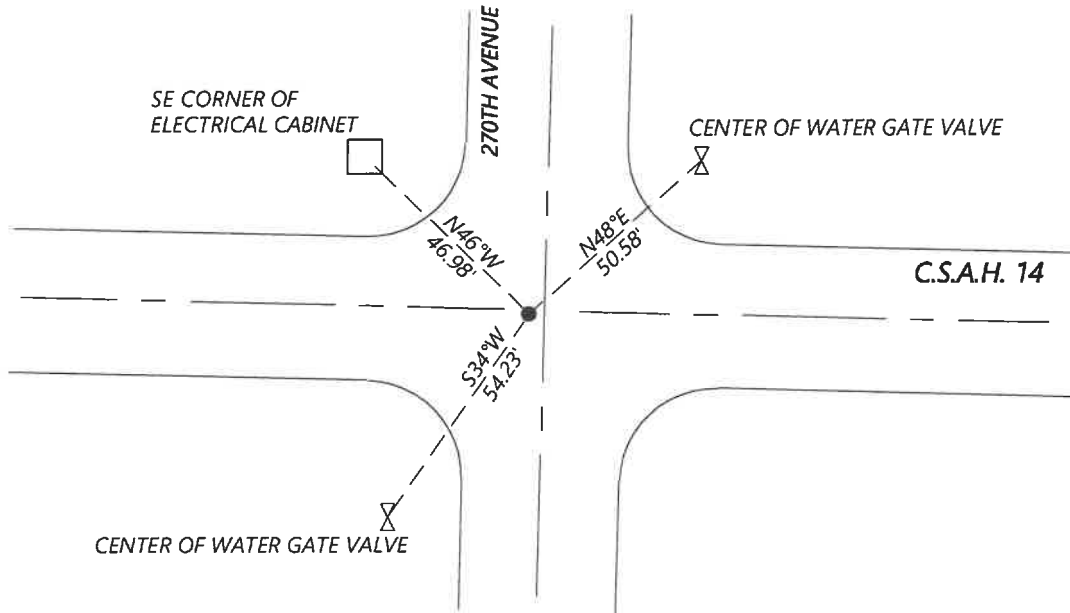
At the corner location shown on the sketch:

On 8/27/2020 found a NO. 4 WITH BROKEN CAP. DOWN 0.2FT

left monument as found       lowered monument       removed monument (explain)

On \_\_\_\_\_ placed a \_\_\_\_\_

### SKETCH OF REFERENCE TIES



N.T.S.

Statement of evidence for this corner location is on back of this page.

I hereby certify that this document was researched and prepared by me or under my direct supervision and that I am a licensed Land Surveyor under the laws of the State of Minnesota.

Signature [Handwritten Signature]

Date 6/16/2021 License No. 45874

Title:

- Land Surveyor       Professional Engineer
- County Surveyor       County Engineer

OFFICE OF THE COUNTY RECORDER

County of Murray

I hereby certify that this document was filed in the Co.

Recorder's office at \_\_\_\_\_ M. on the \_\_\_\_\_ day of \_\_\_\_\_ A.D. 20

County Recorder Karen Brown

by JUN 22 2021, Deputy

DOCUMENT NO. \_\_\_\_\_

Statement of Evidence:

Northeast Corner of Section 4, Township 107 North, Range 39 West, 5th Principal Meridian, Murray County, Minnesota.

*No GLO Notes.*

*1913 June, Survey record for Section 3 shows a stone on south side of grade.*

*1980 October, Corner certificate filed by LS 12967 shows that a concrete monument was found and a  $\frac{1}{2}$ " rebar with cap LS 12967 was set over it.*

*2013 August, Highway Department shows that a surveyor's cap and pin were located with coordinates:  
N: 195154.72 E: 564062.06*

*2020 September, Westwood Professional Services searched and found a No. 4 rebar with broken cap. Located about 1.5ft west of road intersection, per 1980 corner certificate. No other references were recovered. The coordinates fit those listed per 2013 Highway Department data. I accepted the found monument and set additional reference ties.*

Analysis of the recovered data, field evidence and survey measurements, indicates that the monument found is the correct perpetuation of this corner. For additional information concerning this corner please contact Westwood Professional Services.